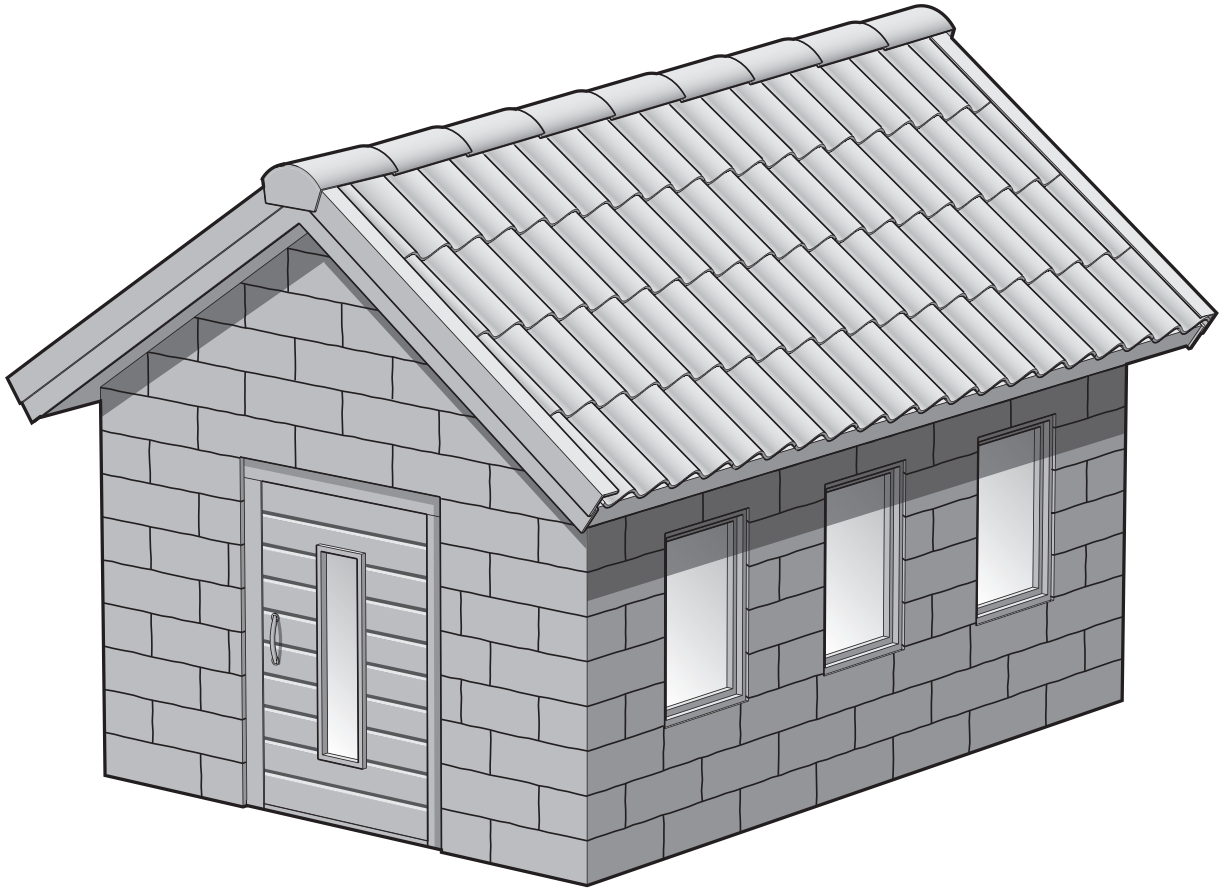
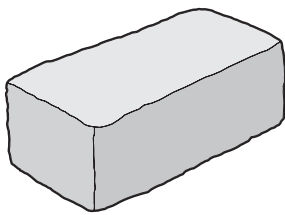


S:T ERIKS

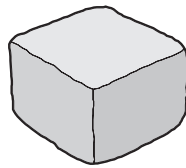
S:T ERIKS LEKSTUGA



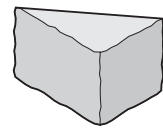
Block Rustik



Normal block
148 st

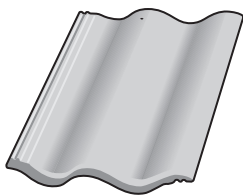


Halvblock
36 st



Kapade trekanter
18 st

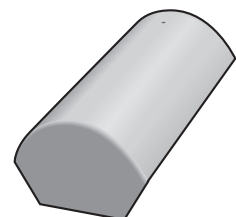
Betongtakpannor



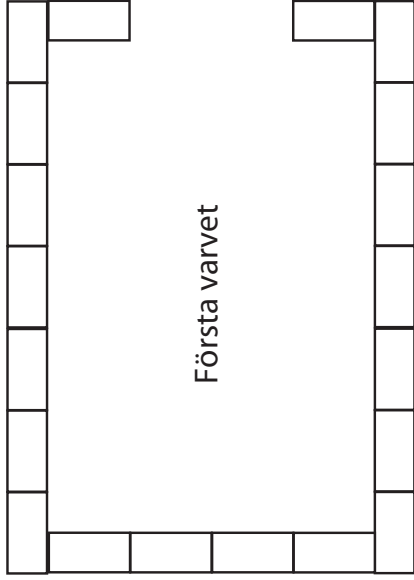
Takpannor
80 st



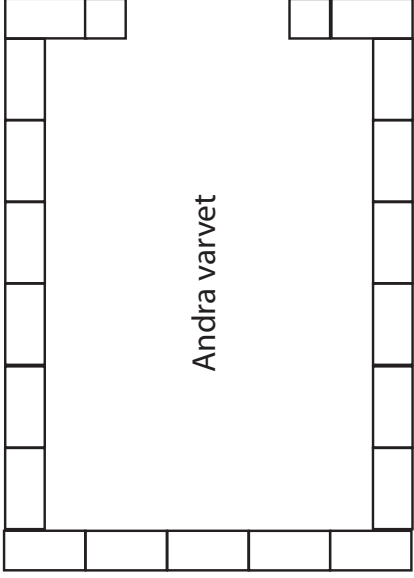
Nockpanna
7 st



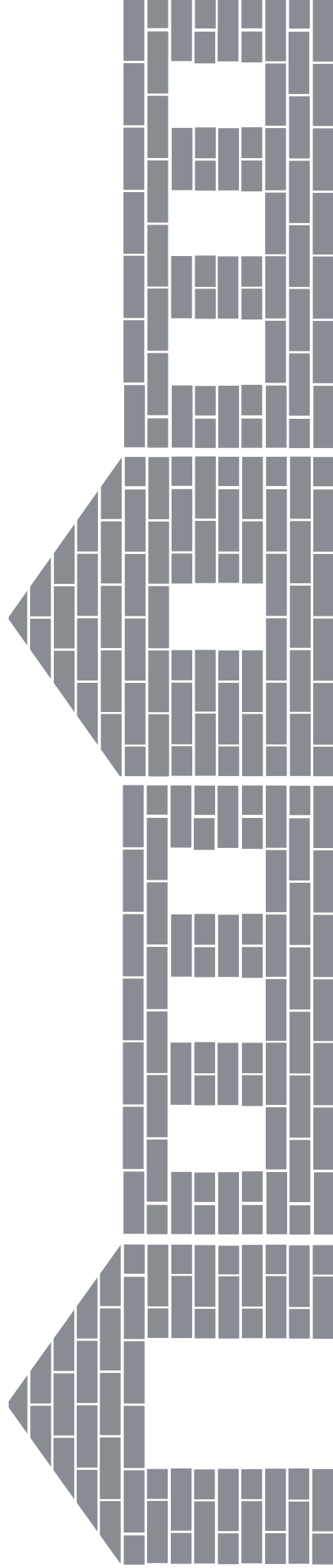
Börjanock
2 st



Första varvet



Andra varvet



148 st helblock, 36 st halvblock, 18 st kapade (= 18 st helblock till).

1,95 lång

2,73 lång